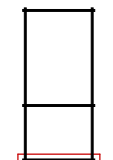


DETAILS

N	QTY
1	1
2	13
3	1
4	1
5	1
6	1
7	1
27	1
28	4

LIST OF ELEMENTS

- 1. Wall 68x44x3500
 - 2. Wall 135x44x3500
 - 3. Wall 135x44x3760
 - 4. Wall 135x44x4020
 - 5. Wall 135x44x4020
 - 6. Wall 135x44x3838
 - 7. Wall 67x44x1503
 - 27. Roof beam 140x70x3128
 - 28. Roof beam 140x70x3128
- Total 10.78 m²



Aldershot SEL11560

Wall 1	---	3	8 OF
--------	-----	---	---------

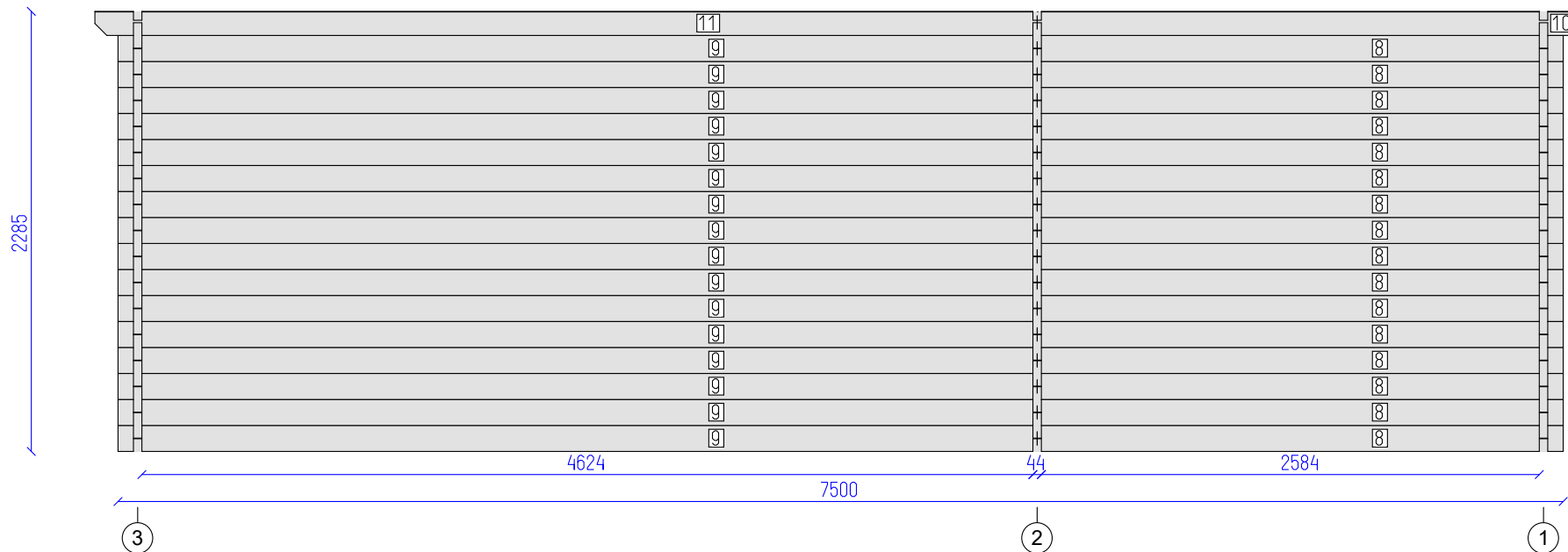


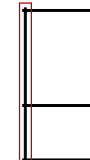
DETAILS

N	QTY
8	16
9	16
10	1
11	1

LIST OF ELEMENTS

- 8. Wall 135x44x2730
- 9. Wall 135x44x4770
- 10. Wall 125x44x2850
- 11. Wall 125x44x4890
- Total 17.17 m²

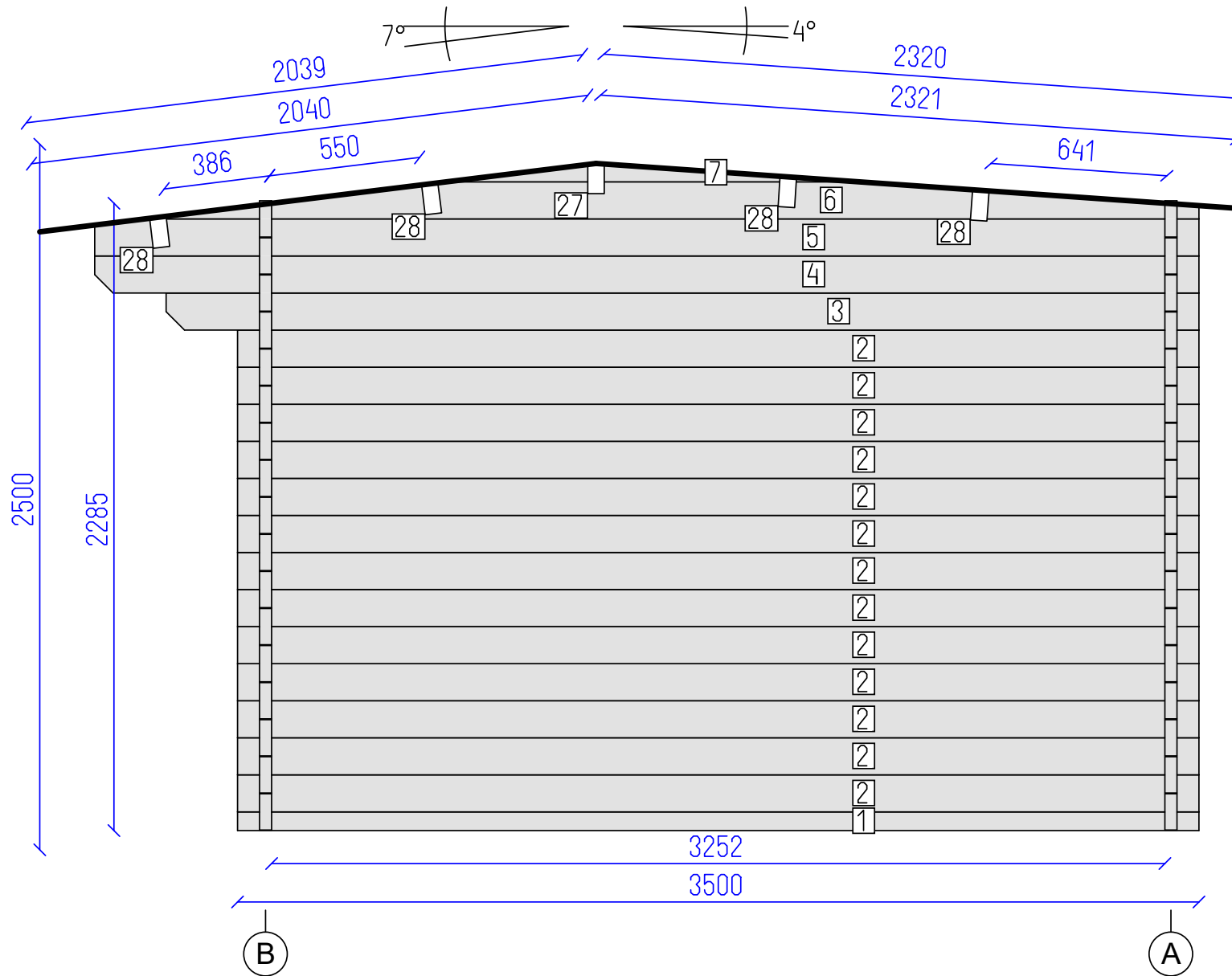




Aldershot SEL11560

Wall A	---	4	8
		SHEET	OF



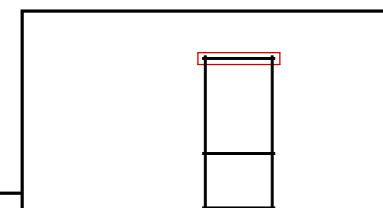


DETAILS

N	QTY
1	1
2	13
3	1
4	1
5	1
6	1
7	1
27	1
28	4

LIST OF ELEMENTS

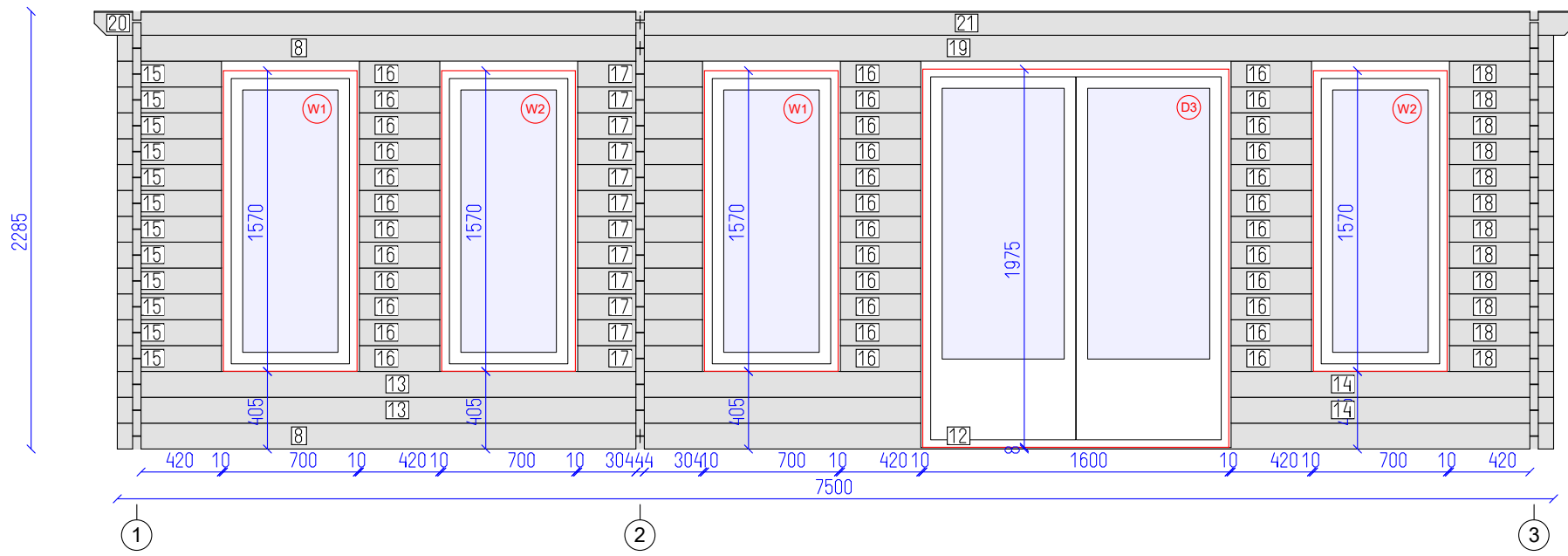
- 1. Wall 68x44x3500
 - 2. Wall 135x44x3500
 - 3. Wall 135x44x3760
 - 4. Wall 135x44x4020
 - 5. Wall 135x44x4020
 - 6. Wall 135x44x3838
 - 7. Wall 67x44x1503
 - 27. Roof beam 140x70x3128
 - 28. Roof beam 140x70x3128
- Total 10.78 m²



Aldershot SEL11560



Wall 3



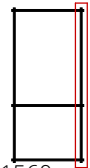
DETAILS

N	QTY
8	2
12	1
13	2
14	2
15	12
16	36
17	12
18	12
19	1
20	1
21	1

LIST OF ELEMENTS

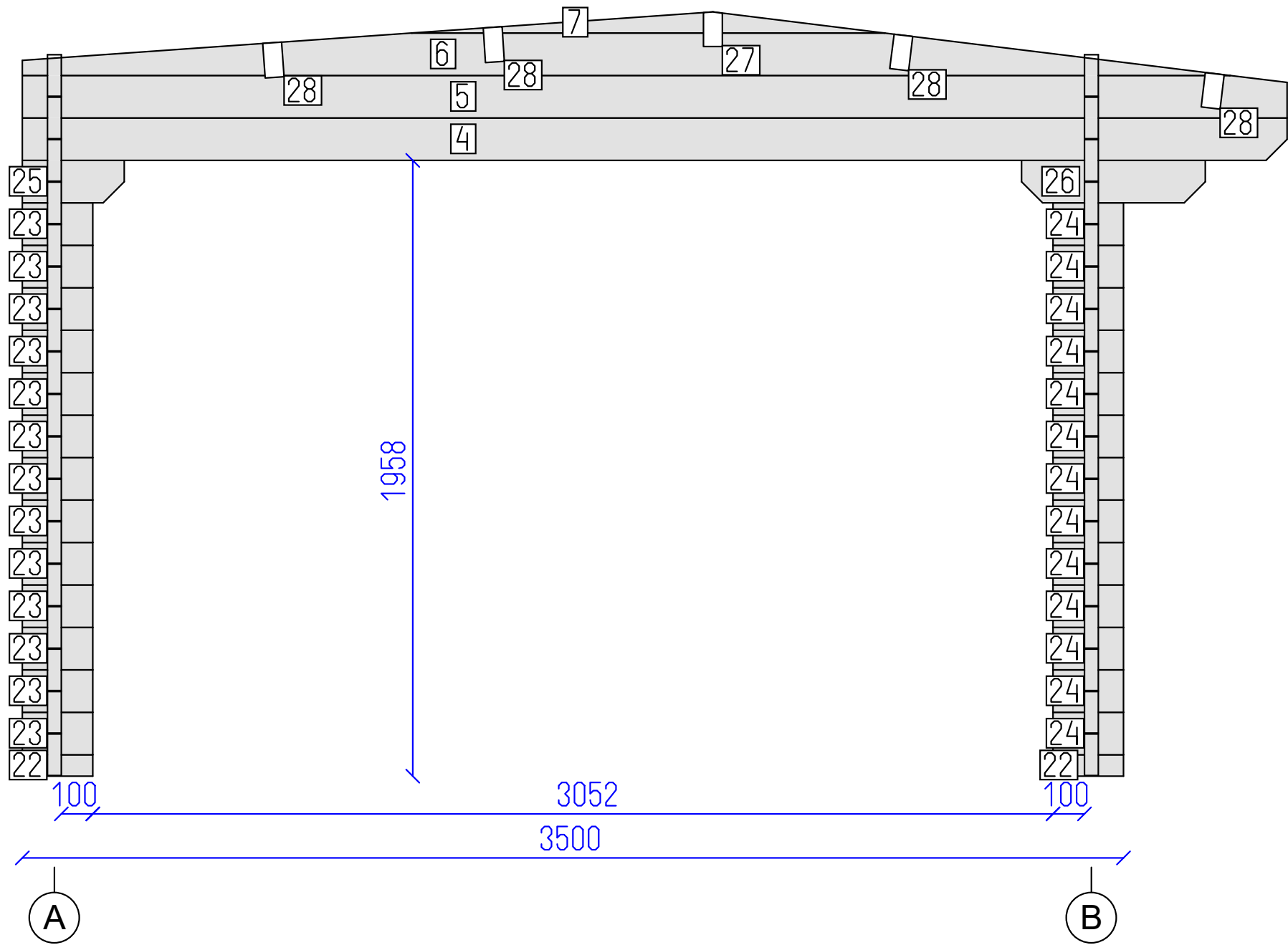
- 8. Wall 135x44x2730
- 12. Wall 135x44x4770
- 13. Wall 135x44x4196
- 14. Wall 135x44x1684
- 15. Wall 135x44x544
- 16. Wall 135x44x420
- 17. Wall 135x44x652
- 18. Wall 135x44x544
- 19. Wall 135x44x4770
- 20. Wall 125x44x2850
- 21. Wall 125x44x4890
- Total 9.44 m²





Aldershot SEL11560

Wall B	---	6	8
		SHEET	OF



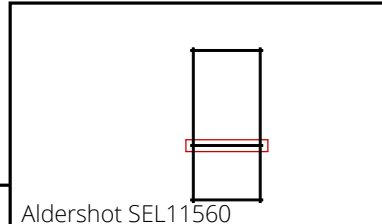
DETAILS

N	QTY
22	2
23	13
24	13
25	1
26	1
4	1
5	1
6	1
7	1
27	1
28	4

LIST OF ELEMENTS

- 22. Wall 68x44x224
- 23. Wall 135x44x224
- 24. Wall 135x44x224
- 25. Wall 135x44x324
- 26. Wall 135x44x584
- 4. Wall 135x44x4020
- 5. Wall 135x44x4020
- 6. Wall 135x44x3838
- 7. Wall 67x44x1503
- 27. Roof beam 140x70x3128
- 28. Roof beam 140x70x3128

Total 4.83 m²



Aldershot SEL11560

Production of your cabin cannot commence until signed & dated to confirm the plans are correct. By signing you are agreeing to Skinner's Sheds Terms & Conditions. Plans cannot be altered once signed & agreed.

