

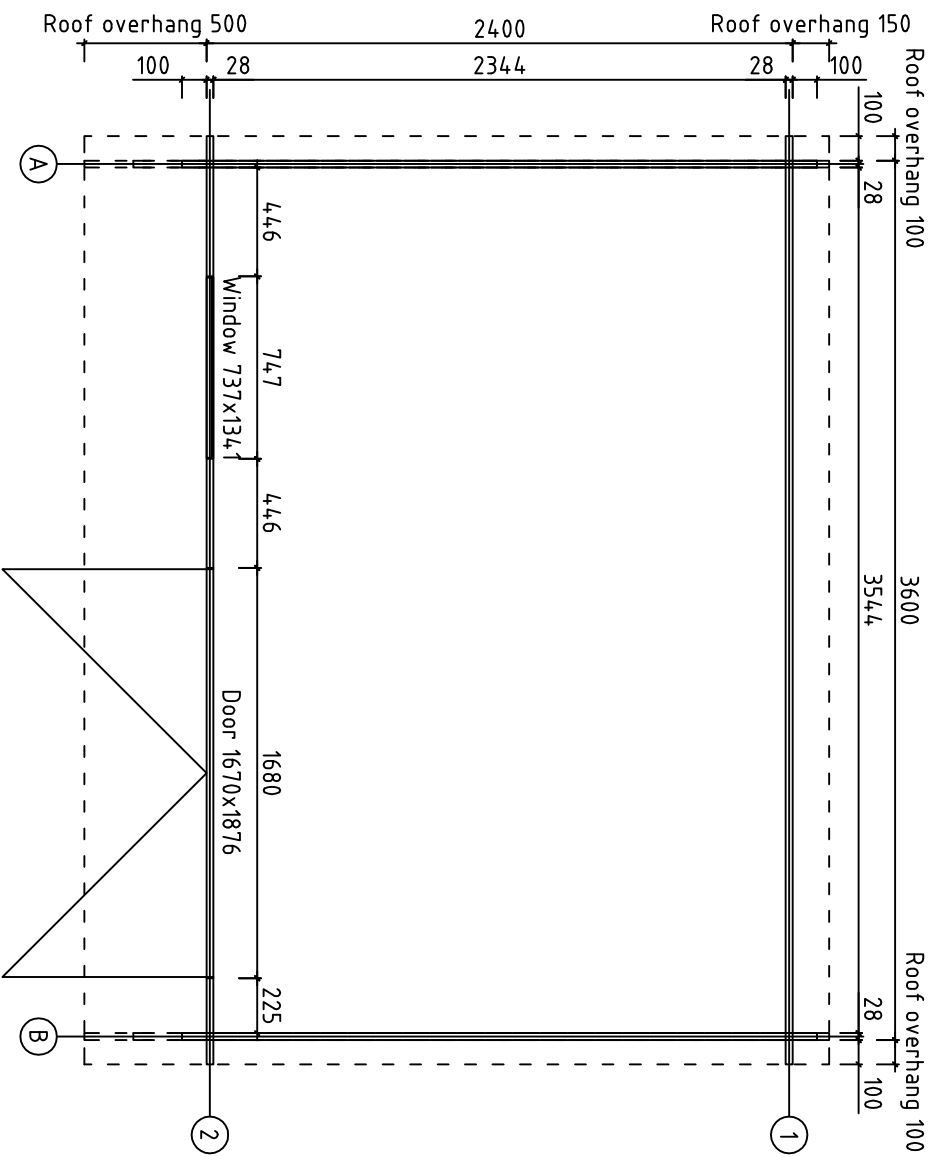
BASIC POINTS

When Erecting Norseman Premier Units

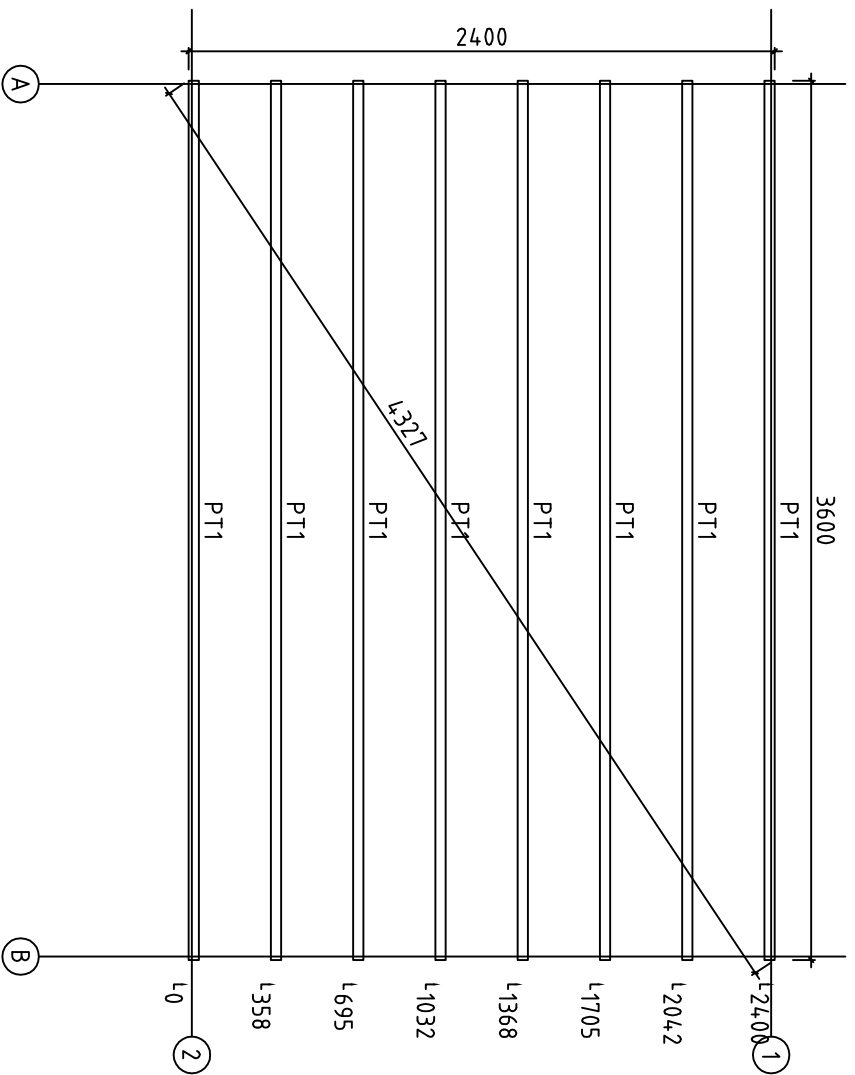
- 1) Lay the floor joists onto a **level base**, or onto bearers on a level base, with the **wider** side facing down. The outer two joists should support the bottom two wall boards on opposite sides of the building, allowing the wall boards to overhang by 5mm approx, (this allows rainwater to drain away from the joists). The remaining joists should be spread equally between the outer two.
- 2) Put the starter boards front and back, on the floor joists. Lock the first side boards to the starters. Check for square, by measuring corner to corner (both measurements should be the same). Screw through starter boards into joists (pilot drill, at an angle, 3 screws each side). The first course of your building is now complete.
- 3) You may lay the floor at this stage, nailing the floorboards to the joists (the floor fits **inside** the walls).
- 4) Build up the walls to a height of 4-5 boards (ensure all tongues are facing upwards). Slide in the door and frame.
- 5) Continue to 9 boards high. At this stage start to use the filler boards and the side window boards. Build up two further layers and slide in the windows and frames.
- 6) Continue to door height and fit the pre-assembled triangular gables, front and back. Take care to fit the step-out boards to the side walls.
- 7) Fit the rafters into the pre-cut slots in the gables. Nail the roof boards to the rafters.
- 8) Felt the roof. Start at each edge and work towards the apex of the roof. The final piece should overlap the apex. Do not leave more than 3 inches overlap front and back. Trim the edges and fit the barge boards. Fit the diamond-shaped finials over the centre join of the barge boards.
- 9) Fit the skirting strips on the floor of the building.
- 10) Fit the corner battens. Using a 10mm bit, drill three holes to line up with the slots cut in the battens. Make sure the battens are fitted to the **side walls, inside** the building. Bolt the battens into place, placing the hole onto the top board, and the notches below. (You may find that as the building settles you will need to loosen the bolts on the corner battens. Leave overnight to allow the building to settle, and re-tighten).
- 11) Treat the building as soon as possible. Suitable treatment may be obtained from our sales office, for customer collection only.

IMPORTANT: Please check for missing or damaged parts **in advance** of the erect day. Any replacement parts can only be delivered on the first available delivery day for your area. Please inform the sales office as soon as possible.

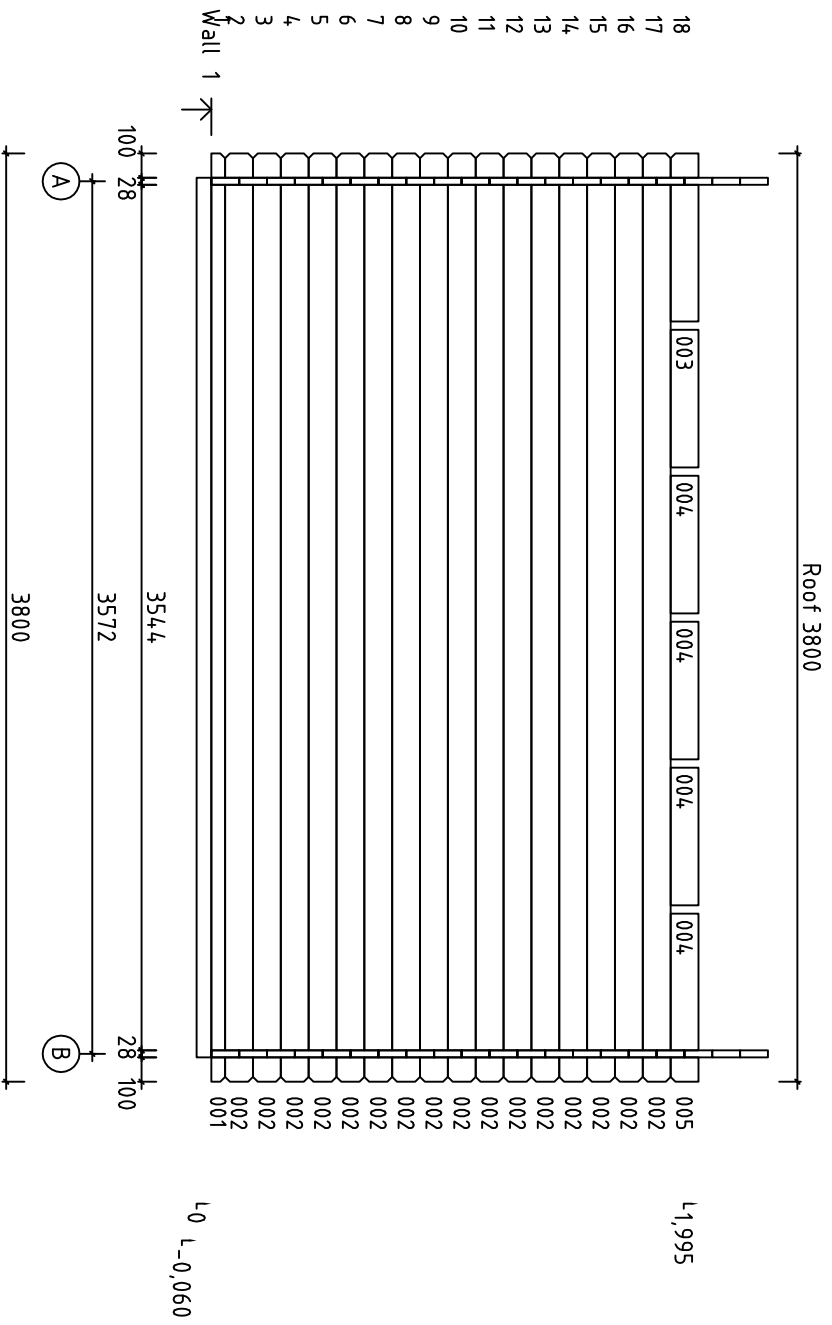
If you have any queries, you may contact us on 01206 212995, for advice.



Kood	128 Studio	Leht	2
Joonis	Base plan	Mootkava	1:30
Materjal	28x114	Kuup.	07.02.2019
Joonestaja	Andres Laur	File	20190207_128_studio.dwg



Kood	128 Studio	Leht	1
Joonis	Floor joists	Mootkava	1:30
Materjal	28x114	Kuup.	07.02.2019
Joonestaja	Andres Laur	File	20190207 128 studio.dwg



Kood	128 Studio	Leht	5
Joonis	Wall 1	Mootkava	1:30
Materjal	2.8x11.4	Kuup.	07.02.2019
Joonestaja	Andres Laur	File	20190207 128 studio.dwg

